



Farm 11581

S24 T137N R49W
2019 Program Year
 Map Created May 01, 2019



Unless Otherwise Noted:

- Barley = Spring for Grain
- Canola = Spring for Processing
- Corn = Yellow for Grain
- Flax = Common for Grain
- Oats = Spring for Grain
- Soybeans = Common for Grain
- Sunflowers = Oil for Grain
- Wheat = Spring for Grain
- All fields are non-irrigated
- Shares are 100% to operator

Common Land Unit

- Tract Boundary
- Non-Cropland
- Cropland
- PLSS

Wetland Determination Identifiers

- Restricted Use
- Limited Restrictions
- Exempt from Conservation
- Compliance Provisions

United States Department of Agriculture (USDA) Farm Service Agency (FSA) maps are for FSA Program administration only. This map does not represent a legal survey or reflect actual ownership; rather it depicts the information provided directly from the producer and/or National Agricultural Imagery Program (NAIP) imagery. The producer accepts the data 'as is' and assumes all risks associated with its use. USDA-FSA assumes no responsibility for actual or consequential damage incurred as a result of any user's reliance on this data outside FSA Programs. Wetland identifiers do not represent the size, shape, or specific determination of the area. Refer to your original determination (CPA-026 and attached maps) for exact boundaries and determinations or contact USDA Natural Resources Conservation Service (NRCS). The imagery displayed on this map was collected in calendar year 2018.

32

PLEASANT PLEASANT



10

PLEASANT PLEASANT

12

PLEASANT PLEASANT

13 PLEASANT

1

PLEASANT

11

PLEASANT

Farm 6075

S11 T137N R49W
2019 Program Year
Map Created April 30, 2019



Unless Otherwise Noted:

- Barley = Spring for Grain
- Canola = Spring for Processing
- Corn = Yellow for Grain
- Flax = Common for Grain
- Oats = Spring for Grain
- Soybeans = Common for Grain
- Sunflowers = Oil for Grain
- Wheat = Spring for Grain
- All fields are non-irrigated
- Shares are 100% to operator

Common Land Unit

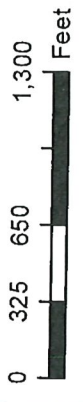
- Tract Boundary
- Cropland
- PLSS

Wetland Determination Identifiers

- Restricted Use
- Limited Restrictions
- Exempt from Conservation
- Compliance Provisions

United States Department of Agriculture (USDA) Farm Service Agency (FSA) maps are for FSA Program administration only. This map does not represent a legal survey or reflect actual ownership; rather, it depicts the information provided directly from the producer and/or National Agricultural Imagery Program (NAIP) imagery. The producer accepts the data 'as is' and assumes all risks associated with its use. USDA-FSA assumes no responsibility for actual or consequential damage incurred as a result of any user's reliance on this data outside FSA programs. Wetland identifiers do not represent the size, shape, or specific determination of the area. Refer to your original determination (CPA-026 and attached maps) for exact boundaries and determinations or contact USDA Natural Resources Conservation Service (NRCS). The imagery displayed on this map was collected in calendar year 2018.

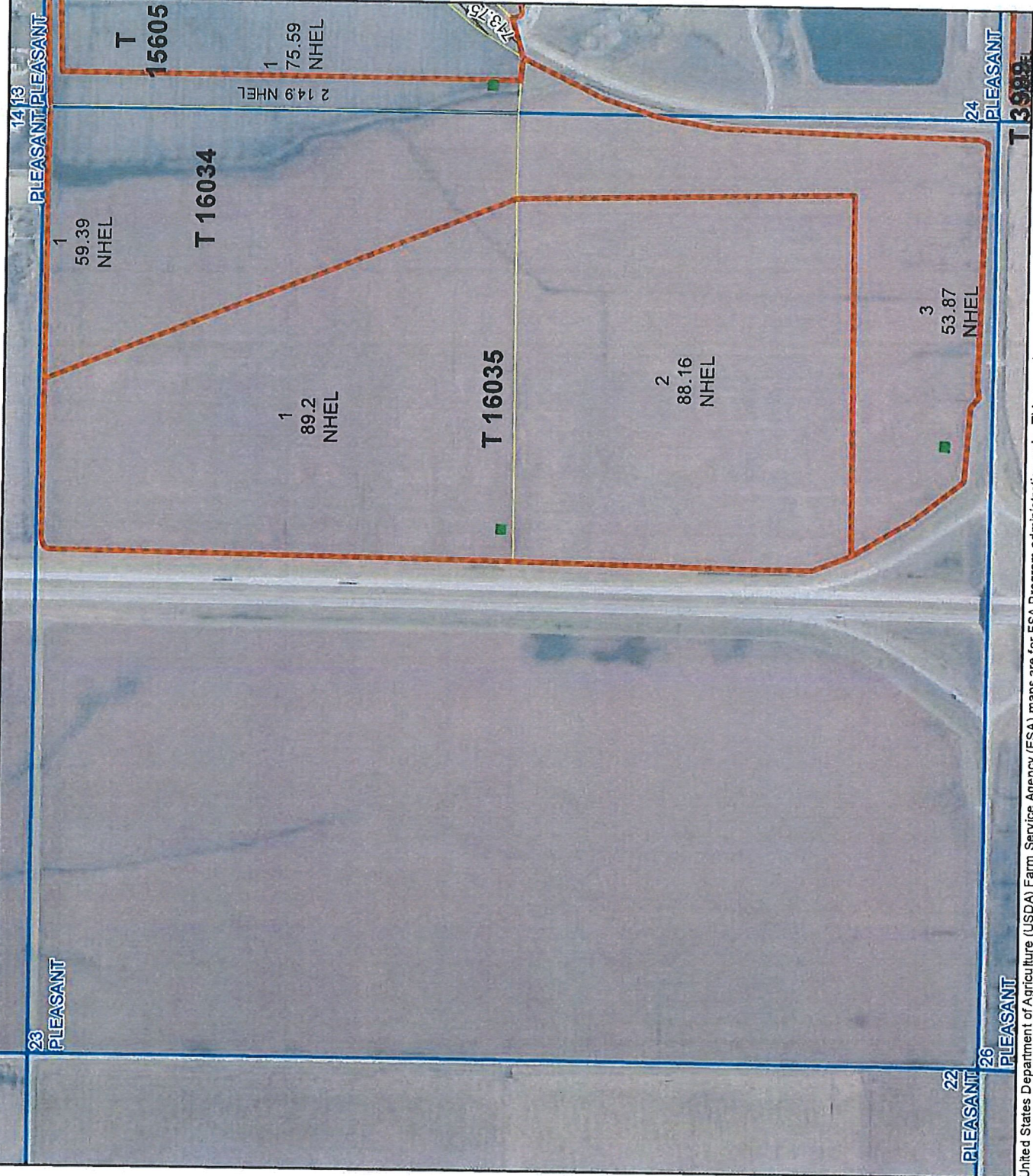
Farm 11581
S23 T137N R49W
2019 Program Year
Map Created May 01, 2019



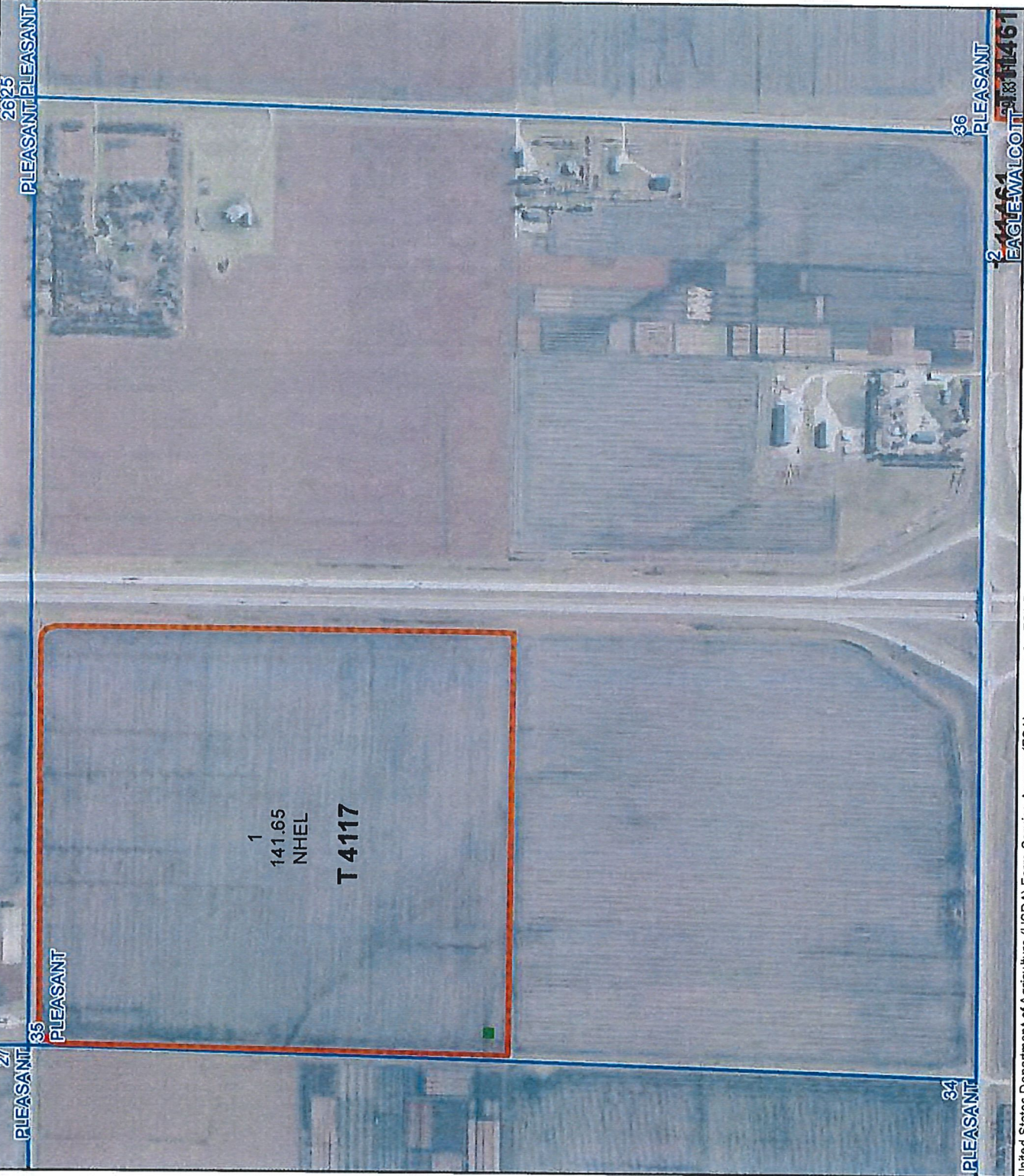
- Unless Otherwise Noted:**
- Barley = Spring for Grain
 - Canola = Spring for Processing
 - Corn = Yellow for Grain
 - Flax = Common for Grain
 - Oats = Spring for Grain
 - Soybeans = Common for Grain
 - Sunflowers = Oil for Grain
 - Wheat = Spring for Grain
- All fields are non-irrigated
Shares are 100% to operator

- Common Land Unit**
- Tract Boundary
 - Non-Cropland
 - Cropland
 - PLSS

- Wetland Determination Identifiers**
- Restricted Use
 - Limited Restrictions
 - Exempt from Conservation
 - Compliance Provisions

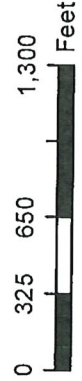


United States Department of Agriculture (USDA) Farm Service Agency (FSA) maps are for FSA Program administration only. This map does not represent a legal survey or reflect actual ownership; rather, it depicts the information provided directly from the producer and/or National Agricultural Imagery Program (NAIP) imagery. The producer accepts the data 'as is' and assumes all risks associated with its use. USDA-FSA assumes no responsibility for actual or consequential damage incurred as a result of any user's reliance on this data outside FSA P programs. Wetland identifiers do not represent the size, shape, or specific determination of the area. Refer to your original determination (CPA-026 and attached maps) for exact boundaries and determinations or contact USDA Natural Resources Conservation Service (NRCS). The imagery displayed on this map was collected in calendar year 2018.



Farm 6075

S35 T137N R49W
2019 Program Year
 Map Created April 30, 2019



- Unless Otherwise Noted:**
- Barley = Spring for Grain
 - Canola = Spring for Processing
 - Corn = Yellow for Grain
 - Flax = Common for Grain
 - Oats = Spring for Grain
 - Soybeans = Common for Grain
 - Sunflowers = Oil for Grain
 - Wheat = Spring for Grain
- All fields are non-irrigated
 Shares are 100% to operator

- Common Land Unit**
- Tract Boundary
 - Cropland
 - PLSS

- Wetland Determination Identifiers**
- Restricted Use
 - Limited Restrictions
 - Exempt from Conservation
 - Compliance Provisions

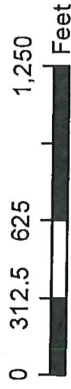
United States Department of Agriculture (USDA) Farm Service Agency (FSA) maps are for FSA Program administration only. This map does not represent a legal survey or reflect actual ownership; rather it depicts the information provided directly from the producer and/or National Agricultural Imagery Program (NAIP) imagery. The producer accepts the data 'as is' and assumes all risks associated with its use. USDA-FSA assumes no responsibility for actual or consequential damage incurred as a result of any user's reliance on this data outside FSA Programs. Wetland identifiers do not represent the size, shape, or specific determination of the area. Refer to your original determination (CPA-026 and attached maps) for exact boundaries and determinations or contact USDA Natural Resources Conservation Service (NRCS). The imagery displayed on this map was collected in calendar year 2018.

Farm 11581

S25 T137N R49W

2019 Program Year

Map Created May 01, 2019



Unless Otherwise Noted:

- Barley = Spring for Grain
- Canola = Spring for Processing
- Corn = Yellow for Grain
- Flax = Common for Grain
- Oats = Spring for Grain
- Soybeans = Common for Grain
- Sunflowers = Oil for Grain
- Wheat = Spring for Grain
- All fields are non-irrigated
- Shares are 100% to operator

Common Land Unit

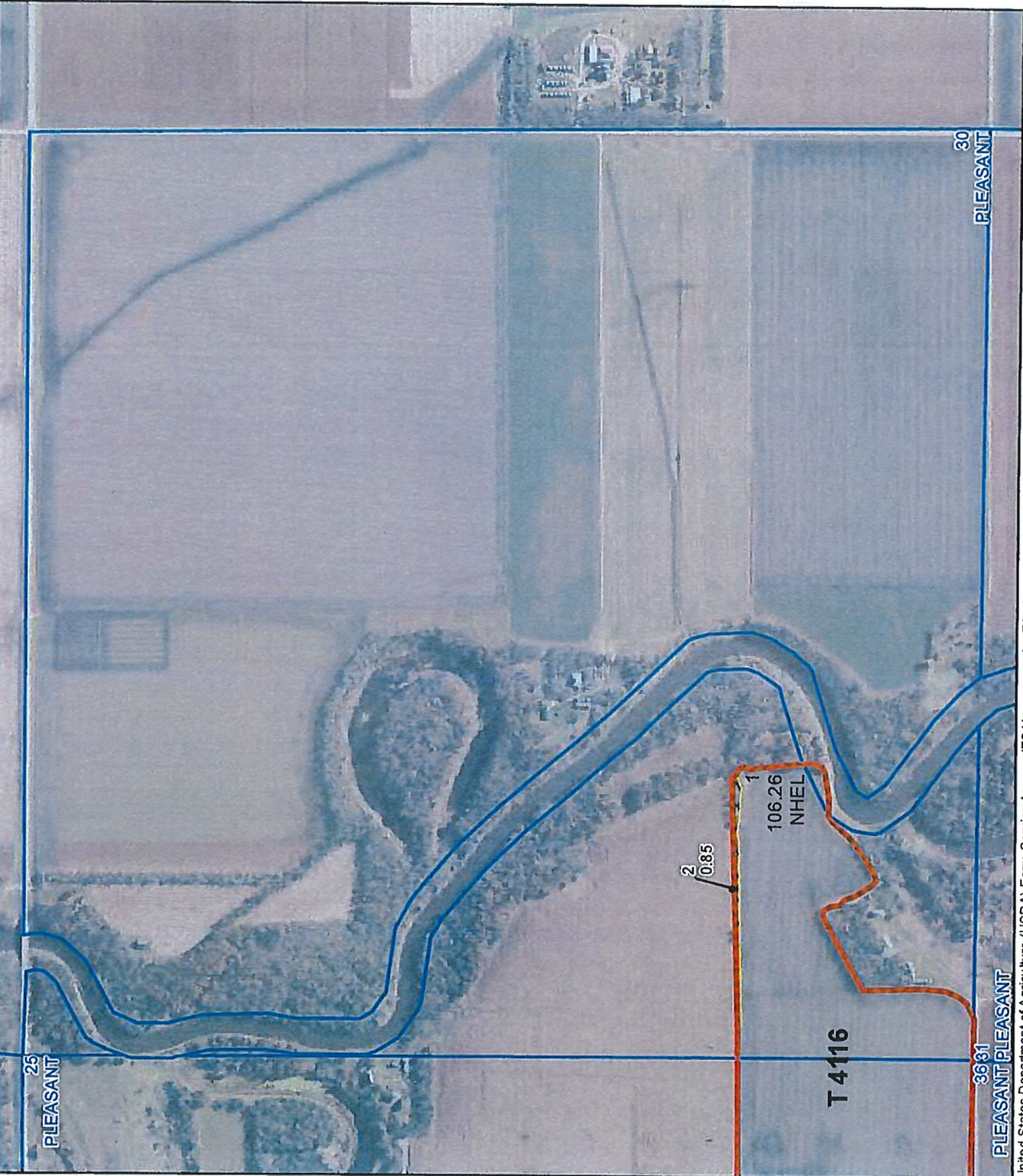
- Tract Boundary
- Non-Cropland
- Cropland
- PLSS

Wetland Determination Identifiers

- Restricted Use
- Limited Restrictions
- Exempt from Conservation
- Compliance Provisions



United States Department of Agriculture (USDA) Farm Service Agency (FSA) maps are for FSA Program administration only. This map does not represent a legal survey or reflect actual ownership; rather, it depicts the information provided directly from the producer and/or National Agricultural Imagery Program (NAIP) imagery. The producer accepts the data 'as is' and assumes all risks associated with its use. USDA-FSA assumes no responsibility for actual or consequential damage incurred as a result of any user's reliance on this data outside FSA P programs. Wetland Identifiers do not represent the size, shape, or specific determination of the area. Refer to your original determination (CPA-026 and attached maps) for exact boundaries and determinations or contact USDA Natural Resources Conservation Service (NRCS). The imagery displayed on this map was collected in calendar year 2018.

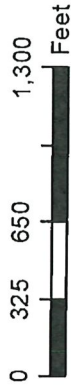


Farm 11581

S30 T137N R48W

2019 Program Year

Map Created May 01, 2019



Unless Otherwise Noted:

- Barley = Spring for Grain
- Canola = Spring for Processing
- Corn = Yellow for Grain
- Flax = Common for Grain
- Oats = Spring for Grain
- Soybeans = Common for Grain
- Sunflowers = Oil for Grain
- Wheat = Spring for Grain
- All fields are non-irrigated
- Shares are 100% to operator

Common Land Unit

- Tract Boundary
- Non-Cropland
- Cropland
- PLSS

Wetland Determination Identifiers

- Restricted Use
- Limited Restrictions
- Exempt from Conservation
- Compliance Provisions

United States Department of Agriculture (USDA) Farm Service Agency (FSA) Farm Service Agency (FSA) maps are for FSA Program administration only. This map does not represent a legal survey or reflect actual ownership; rather it depicts the information provided directly from the producer and/or National Agricultural Imagery Program (NAIP) imagery. The producer accepts the data 'as is' and assumes all risks associated with its use. USDA-FSA assumes no responsibility for actual or consequential damage incurred as a result of any user's reliance on this data outside FSA Programs. Wetland identifiers do not represent the size, shape, or specific determination of the area. Refer to your original determination (CPA-026 and attached maps) for exact boundaries and determinations or contact USDA Natural Resources Conservation Service (NRCS). The imagery displayed on this map was collected in calendar year 2018.